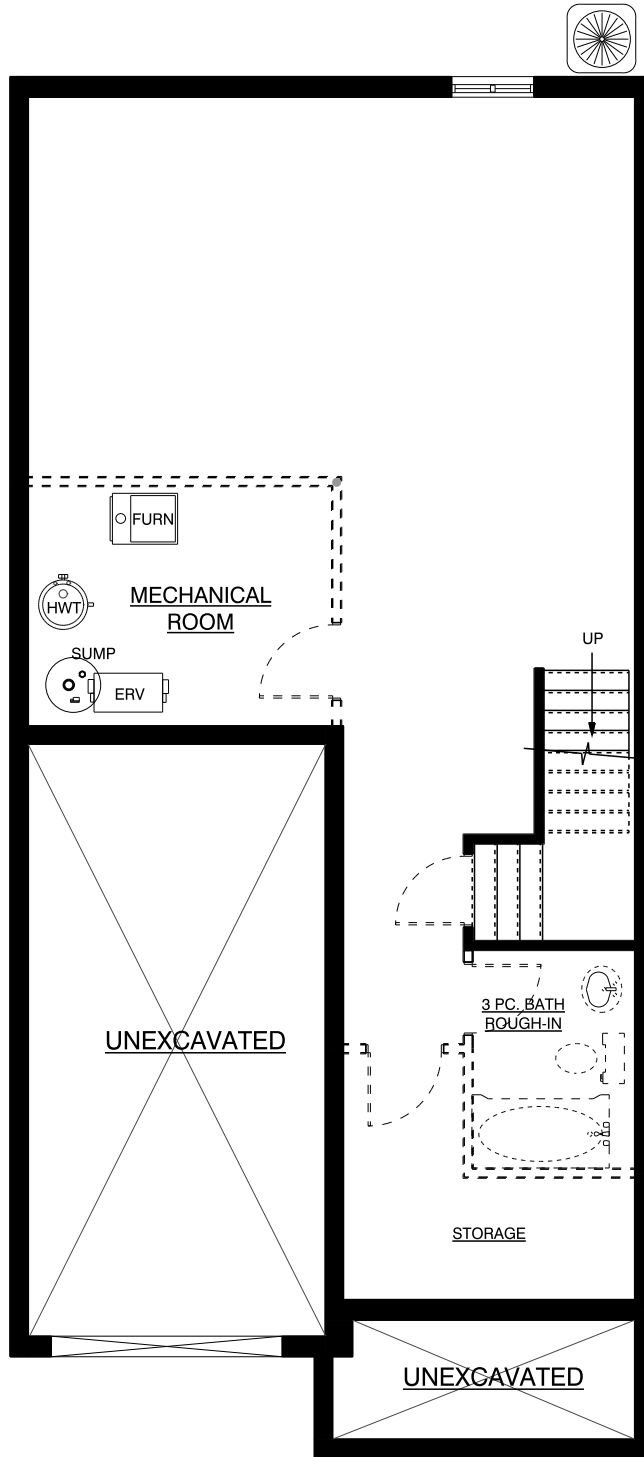




## FRONT ELEVATION

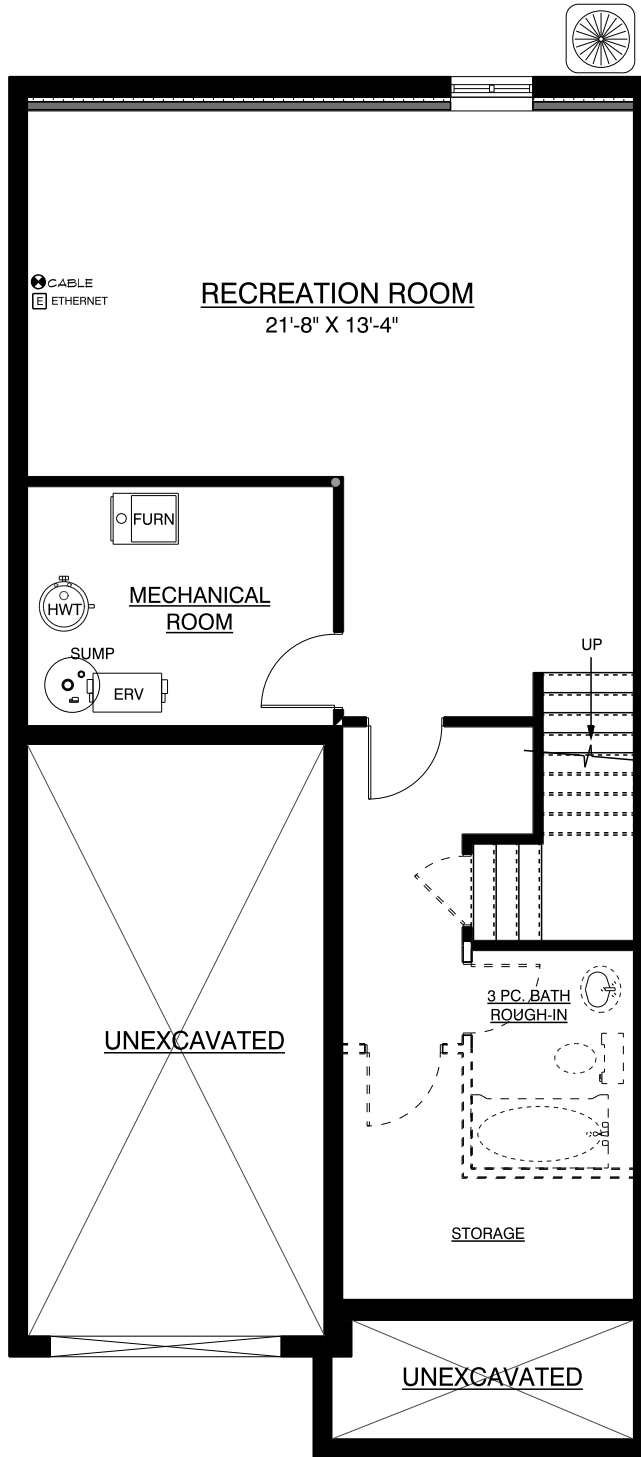
1,717 SQ. FT.

# VICTORIA FLATS CONDOMINIUMS Interior Unit



**BASEMENT PLAN**  
UNFINISHED

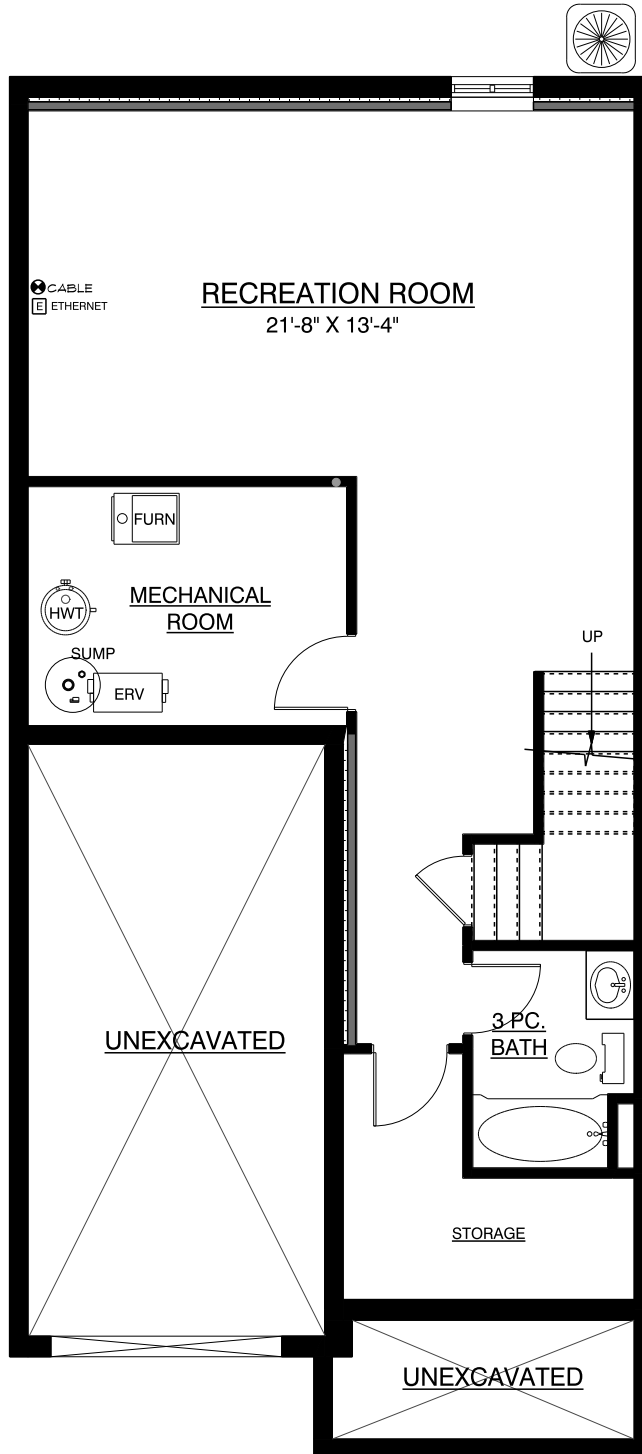
**VICTORIA FLATS**  
**CONDOMINIUMS**  
**Interior Unit**



## BASEMENT PLAN

FINISHED RECREATION ROOM  
469 SQ. FT.

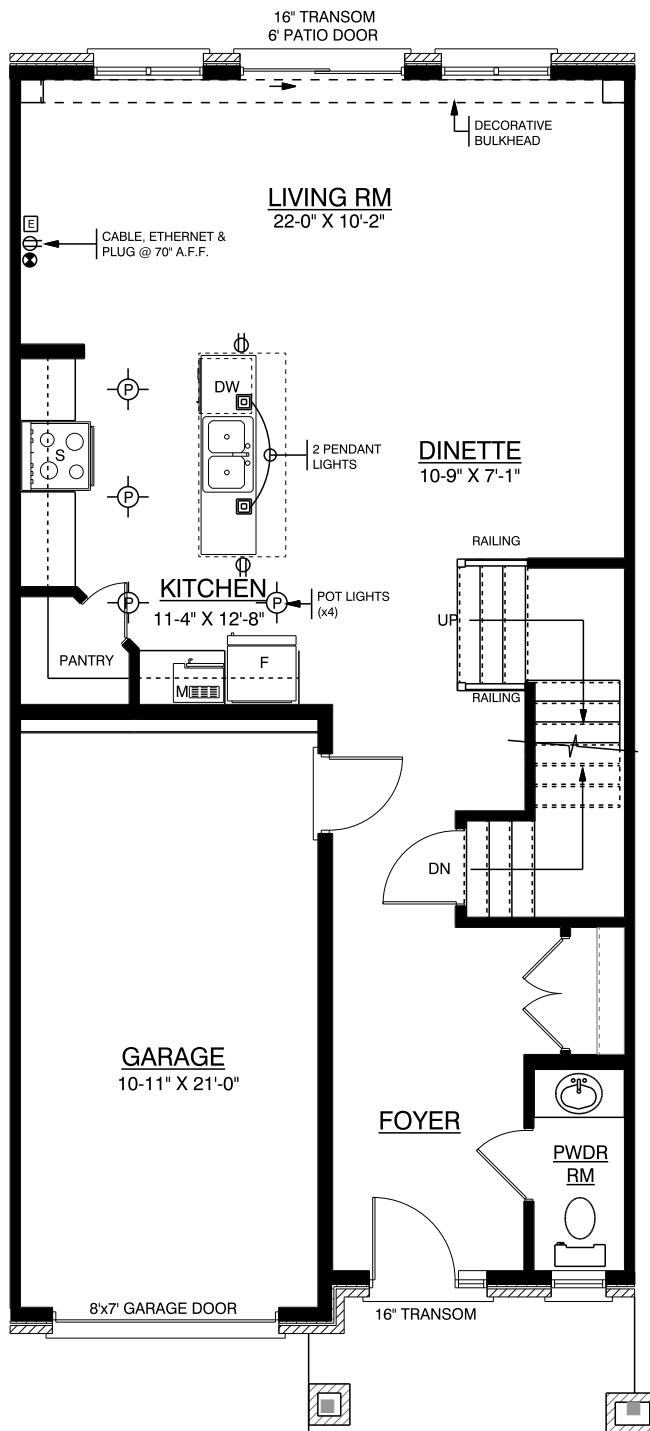
# VICTORIA FLATS CONDOMINIUMS Interior Unit



## BASEMENT PLAN

FINISHED REC ROOM & BATH  
559 SQ FT.

# VICTORIA FLATS CONDOMINIUMS Interior Unit

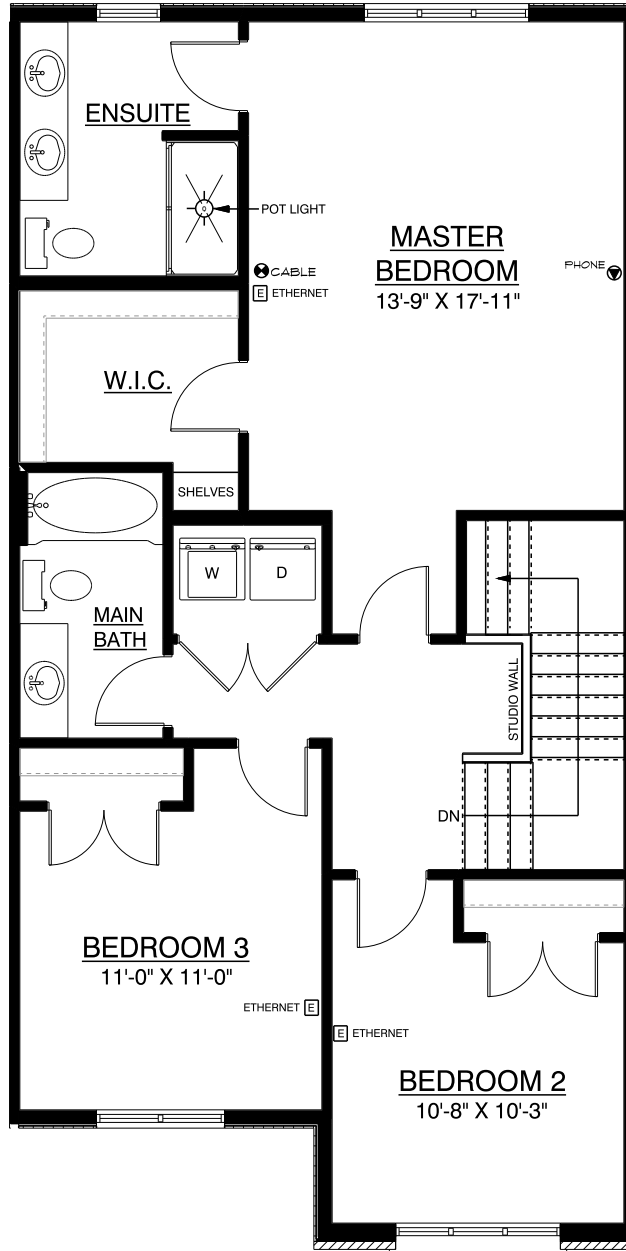


## MAIN FLOOR PLAN

795 SQ.FT.

# VICTORIA FLATS CONDOMINIUMS

## Interior Unit



## UPPER FLOOR PLAN

922 SQ.FT.

# VICTORIA FLATS CONDOMINIUMS

## Interior Unit